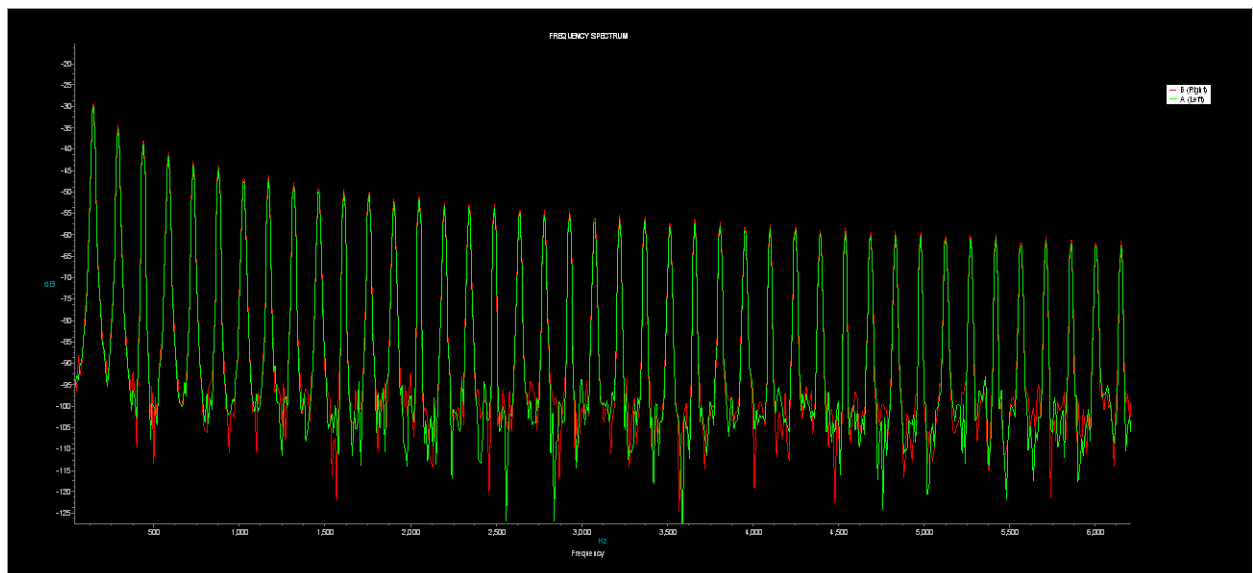
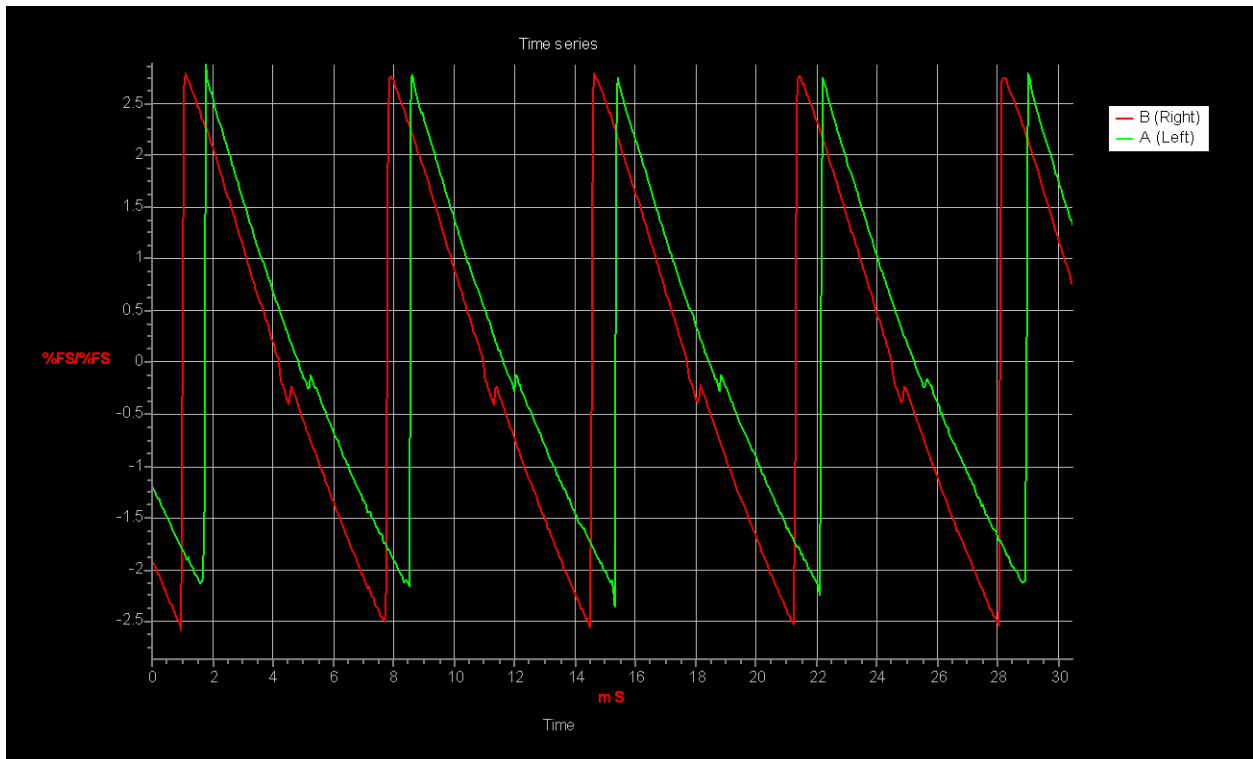
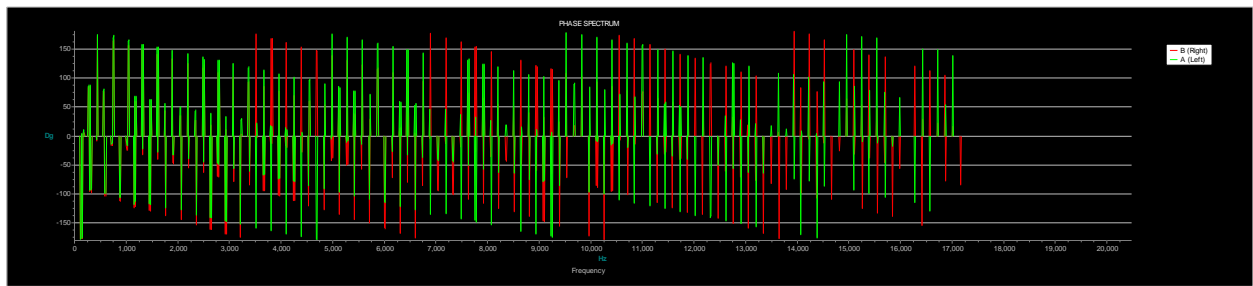
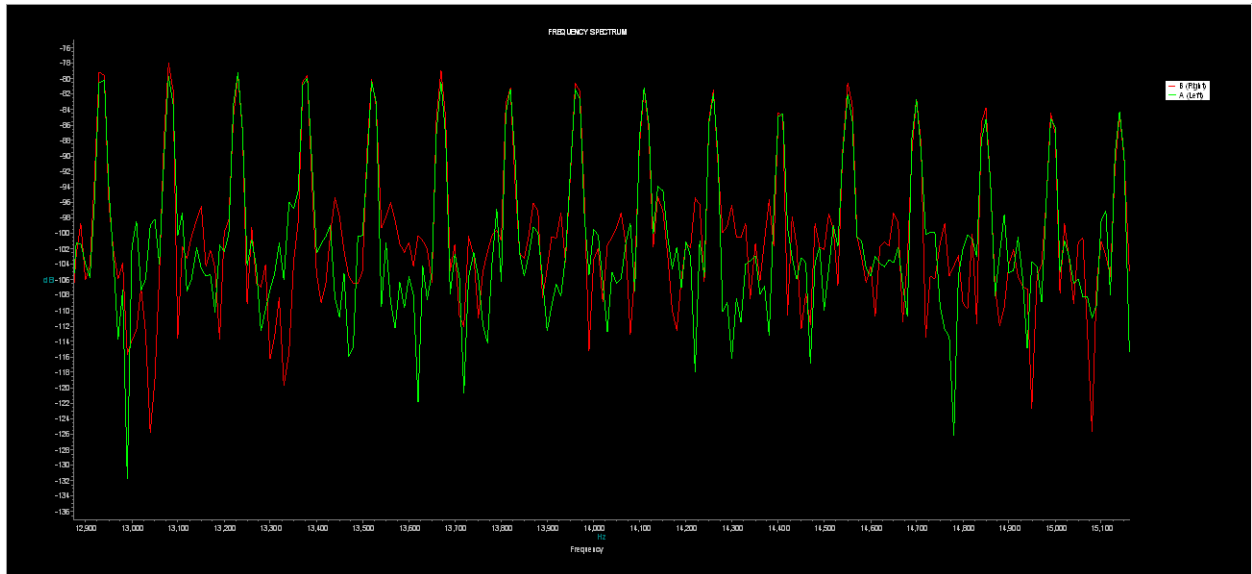


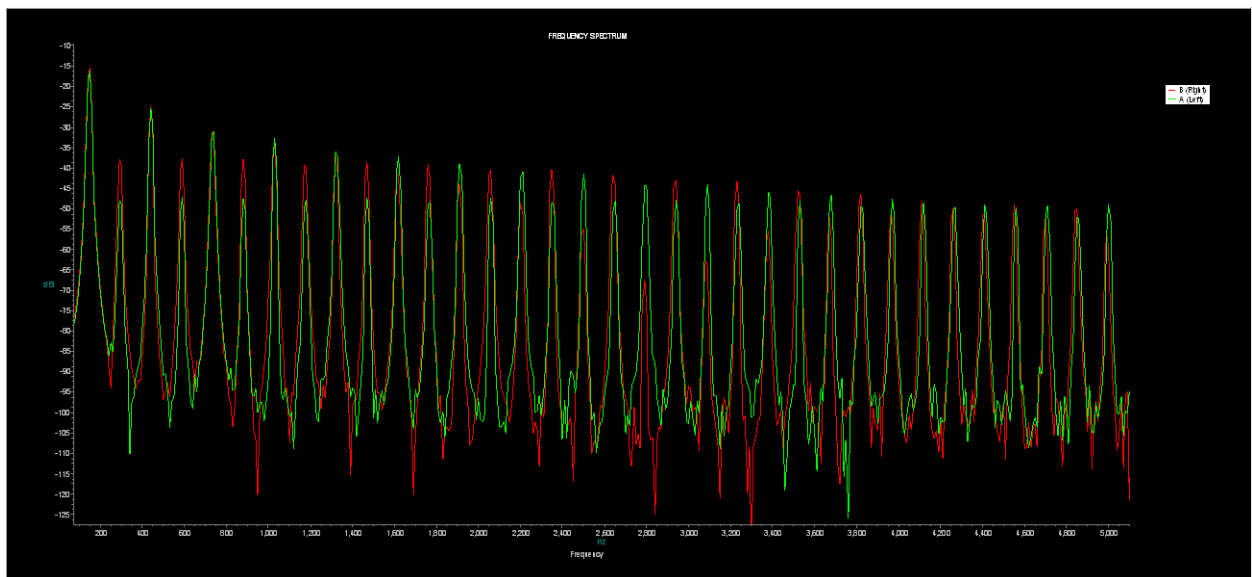
OB 6 hardware= green, Omnisphere "OB6" red. This page is all saw waves.



Pages 2 and 3 are square waves. Seems to be a little more peak area between the main peaks with the emulation software. To my ear, the emulation software has a slightly softer sound. Amazingly close though.



This is the square wave below. The



The emulation has slightly sounded edges. The little nip on the green right corner adds a slight fizz.

